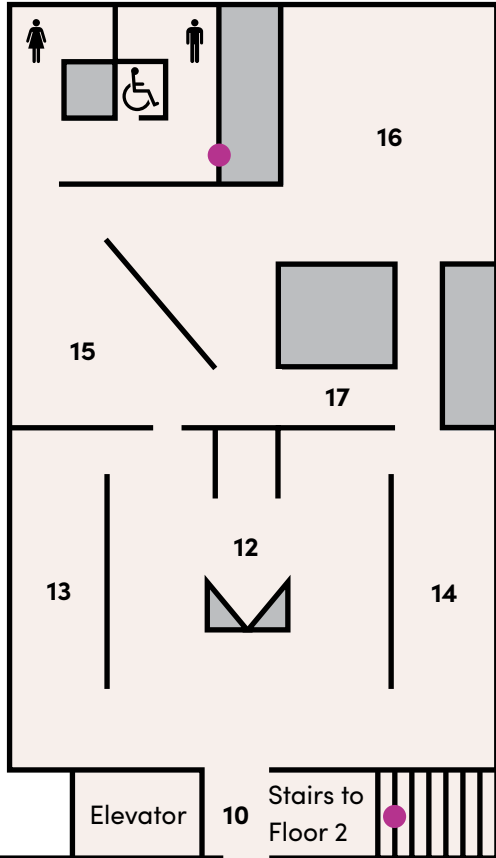
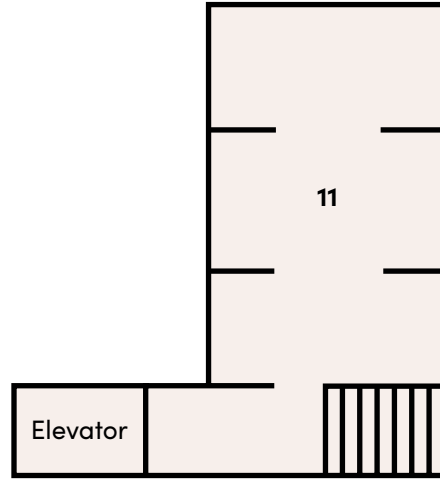


MAP

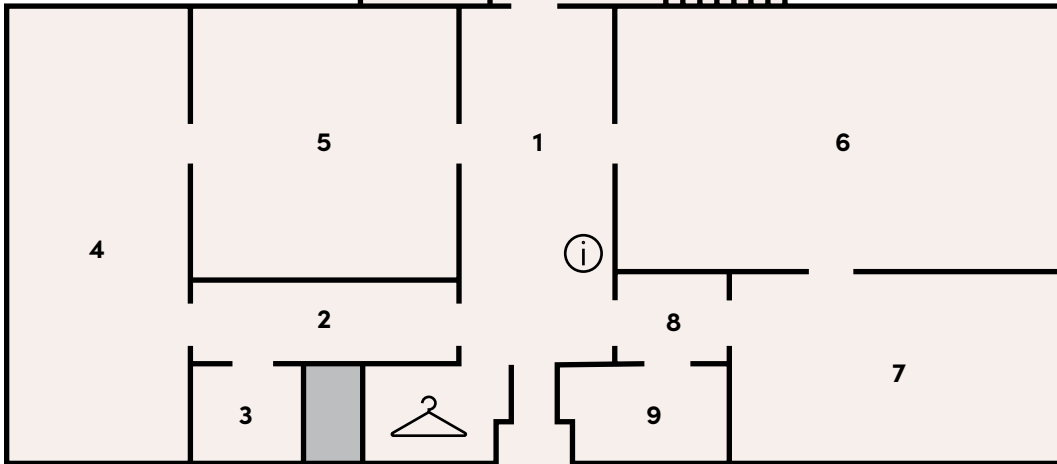
Floor 1



Floor 2



● Emergency Exit



Entrance

1. Museum Lobby + Information Desk
2. Art of the Islamic World
3. William Hayes Ackland Tomb
4. Arts of Asia
5. *Processing Systems: Bonding by Sherrill Roland*  
(through July 13, 2025)
6. *Dürer to Matisse: 400 Years of European Prints*  
(through January 5, 2025)
7. *Dürer to Matisse*  
(through January 5, 2025)
8. Museum Store
9. Museum Store
10. Elevator + Stairs to Second Floor
11. Ackland Upstairs
12. Art since 1950
13. Art from the Ancient Mediterranean and Europe before 1850
14. Art from Europe and the United States, 1850-1950
15. Art from Europe before 1850
16. Classical Art of Africa
17. Art from Europe and the United States, 1850-1950

**Outside on the Ackland Terrace:**

*pARC* by The Urban Conga  
(through July 7, 2025)

# Welcome to the Ackland Art Museum!

## Admission is free.

## Donations are appreciated.

### Museum and Store Hours

Wed–Sat | 10 a.m. – 5 p.m.

Sun | 1 p.m. – 5 p.m.

2nd Fridays | 10 a.m. – 9 p.m.


Mon–Tues | Closed

### Become a Member

Membership is an ideal way to participate in the many offerings of the Ackland while providing essential support for the Museum. Ackland Members save 10% on Museum Store purchases. Become a Member at the Store today!

### Stay in Touch

Sign up for the Ackland e-news on our website at [ackland.org](https://ackland.org) and stay up-to-date on exhibitions & public programs.

 @ackland\_art\_museum

 @AcklandArtMuseum

 UNC-Guest



THE UNIVERSITY  
of NORTH CAROLINA  
at CHAPEL HILL